

20' Townhome 1,444 sq.ft.



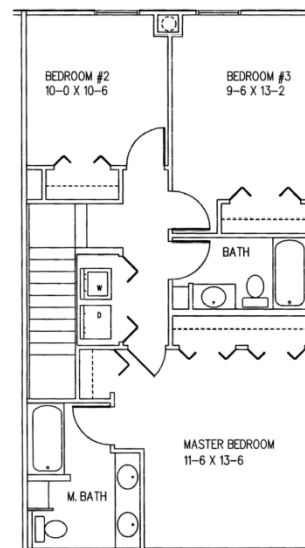
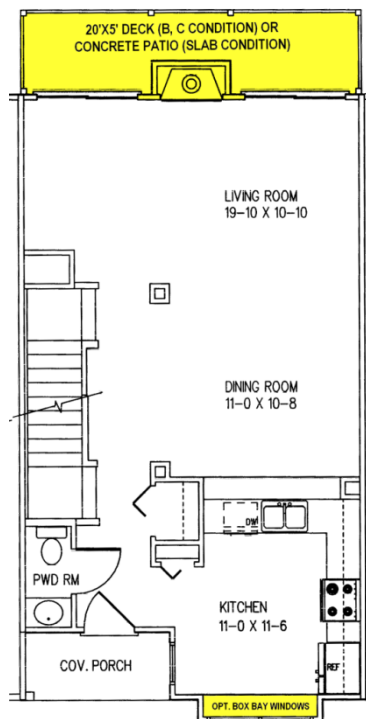
20' Townhomes, highly modified

Specifications

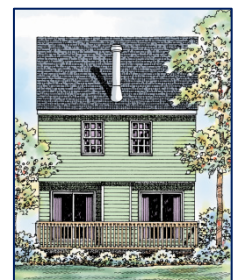
Living area:	1,444 sq.ft.
First floor area:	684 sq.ft.
Upper level area:	760 sq.ft.
Bedrooms:	3
Baths:	2 1/2
House width:	20'
House depth (1 st):	36'
House depth (2 nd):	38'
Primary roof pitch:	6/12
Garage area:	280 sq.ft.
Rear deck area:	100 sq.ft.
Main ceiling height:	8'
Foundation:	B, C, S
Walls:	2x4, 2x6

Enhancements

- Rear deck with railing (20'x5')
- Turned gables
- Box bay windows
- Fireplace
- Front or rear integral garage (option available only with full basement)



20' Townhome
(Front garage)



20' Townhome
(Rear)

Photos or renderings will vary from actual plan.



Affordable Home Collection

Your Affordable home package will include these basic package components:
(Upgrades and substitutions are available on most components)

Exterior Shell Package

- Blueprints
- Treated sill plates
- Floor joists and rim joists
- 3/4" plywood floor
- Wall framing including 2"x4" or 2"x6" studs
- OSB wall sheathing
- Building wrap
- Roof truss system
- OSB roof sheathing
- Fiberglass roofing shingles
- Aluminium dripedge
- Roofing felt
- Roof ventilation
- Insulated windows
- Exterior trim
- Vinyl siding
- Vinyl soffit & fascia
- Insulated exterior doors
- Exterior locksets
- Nails and hardware

Interior Package

- R-13 wall insulation
- R-30 ceiling insulation
- Insulation baffles
- Drywall
- Drywall accessories & finishing materials
- Colonist interior doors
- 2 1/4" casing
- 3 1/4" base
- Shelving & closet rods
- Privacy and passage locks
- Fasteners and adhesives

Kitchen and Bath Packages

- Timberlake Fairfield Oak kitchen cabinets
- Post-formed laminated countertop
- Stainless steel double bowl sink
- Timberlake Fairfield Oak bathroom vanity
- Cultured marble vanity top
- Bath cabinet & mirror
- Tub/shower unit



The following materials and services are not supplied by 84 Lumber:

- Foundation
- Steel beams or columns
- Brick
- Stone
- Stucco
- Plumbing
- HVAC
- Electric
- Finish flooring
- Appliances
- Seismic, fire, and high-wind load engineering

To order plans call 1-800-359-8484, or see your local 84 Lumber associate.